

New

PowerMarquee™

The Marquee you have always wanted...



Up to 4 lines of 2", 40 characters, 2W4H

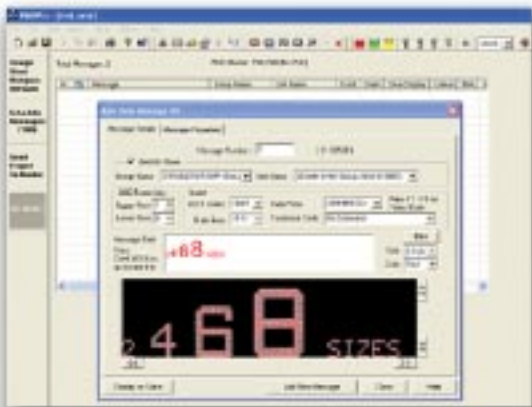
Connectivity to major PLCs and industrial networks including DH+, Remote I/O, Modbus Plus and Ethernet

International Character set

Cost Effective plantwide communications

Blinking, Chained, Circular, Scrolling & Invisible messages plus Data logging

Models with Message Storage and capability to display stored messages based on Bits and/or values



Easy Windows Programming including export/import of message database and meaningful names for Marquees

UTICOR

Cost effective Marquees for plant-wide communications

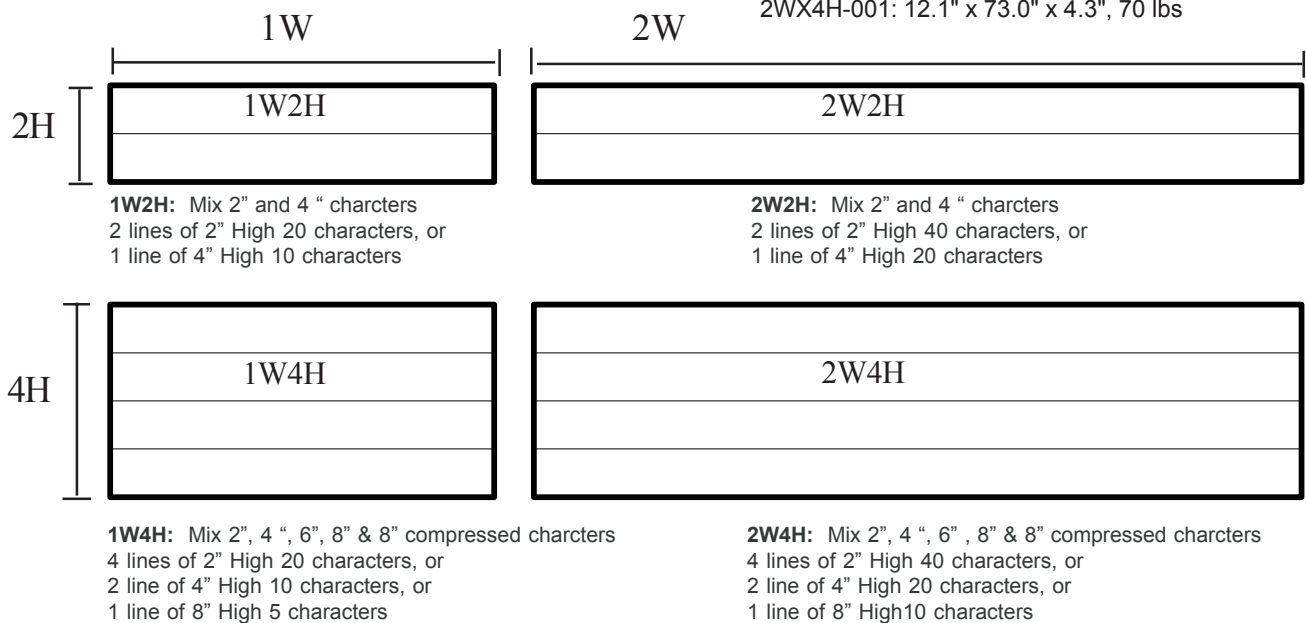
Uticor the most recognized name in Message Displays introduces several cost effective models for plant wide communications. These models though cost effective carries the same high quality that you associate with Uticor products. Uticor uses matched LEDs for uniform aging over long period of times. The result is uniform looking display over the long periods of time.

In addition the Uticor displays can now be programmed using a windows based programming software with message import/export capabilities to other applications.

The marquees are available in two models. Models are available with or without message storage capabilities. The models without storage capabilities are called Slave displays, and are used with a Uticor Message controller, a PC or some other controller. The slave marquees display message sent to them by controllers.

The models with message store capabilities store messages, and are called master marquees. The master marquees monitors controllers and displays appropriate messages based on the monitored registers or bits. The master marquees can also drive slave marquees.

The PowerMarquee family currently consist of 4 members as shown below. On each of the model, you can mix various sizes of characters on the same line.



Specifications

POWER REQUIREMENTS: 115/230 VAC, 47-63 Hz;

1W2H: 70 VA

2W2H/1W4H: 130 VA

2W4H: 250 VA

OPERATING TEMPERATURE: 0 to 60 °C (0 to 140 °F) Ambient

STORAGE TEMPERATURE: -40 to +95 °C (-40 to +203 °F) Ambient

HUMIDITY: 0-95% RH Noncondensing

ELECTRICAL INTERFERENCE TOLERANCE: NEMA ICS 2-230 Showering Arc Test , ANSI C37.90a-1974 (SWC) Surge Withstand Capability Test

CHARACTER SIZES:

2", 4", 6", 8", or 8" compressed Red LED characters

2" (50.8 mm) High : 5 x 7 Dot Matrix

4" (101.6 mm) High : 10 x 14 Dot Matrix

6" (152.4 mm) High Characters: 15 x 21 Dot Matrix

8" (203.2 mm) High Characters: 20 x 28 Dot Matrix

8" Compressed 203.2 mm) High Characters: 10 x 28 Dot Matrix

NO. OF LINES & CHARATCERS WITH 2" CHARACTERS

1W2H: 20 characters (2" High), 2 lines

1W4H: 20 characters (2" High), 4 lines

2W2H: 40 characters (2" High), 2 lines

2W4H: 40 characters (2" High), 4 lines

CHARACTER SET: All Standard ASCII Upper/Lower Case and Symbols

INTERNATIONAL CHARACTER SETS: U.S., Cyrillic, English, Swedish, Danish, French, German, Japanese Kana

HOUSING: Extruded and Flat Plate Aluminum

DIMENSIONS & Weight:

1WX2H-001: 7.32" x 37.0" x 4.3", 18 lbs

2WX2H-001: 12.1" x 37.0" x 4.3", 34 lbs

1WX4H-001: 7.3" x 73.0" x 4.3", 34 lbs

2WX4H-001: 12.1" x 73.0" x 4.3", 70 lbs



TBM S.R.L. - Maipú 2420 - 2000 - ROSARIO - ARGENTINA
TEL. 0341 481 9757 - FAX 0341 481 3546
E - MAIL : t b m @ t b m . c o m . a r